

White-tailed Deer Antler Score: A Pictorial Presentation

THE SAMUEL ROBERTS
NOBLE
FOUNDATION

NF-WF-14-02

Michael D. Porter

Wildlife and Fisheries Consultant
Agricultural Division
Samuel Roberts Noble Foundation
Ardmore, Oklahoma 73401

Kenneth L. Gee

Conservation Delivery Specialist
Oaks and Prairies Joint Venture
6438 Gene Autry Road
Ardmore, Oklahoma 73401

Introduction

From a hunting and economic perspective, white-tailed deer, *Odocoileus virginianus*, is the most important wildlife species in the eastern half of the U.S. More landowners and hunters in this region are interested in white-tailed deer than in any other wildlife species. More income is generated for eastern, central and southern state wildlife departments and landowners through white-tailed deer hunting than is generated by any other wildlife species.

Many, if not most, deer hunters and deer managers want to harvest bucks with large antlers. Antler size and corresponding antler score typically increase as a buck ages. In many areas, buck age is the factor that most limits antler size of male white-tailed deer even though nutrition and genetics also play important roles.

Most bucks must be allowed to live several years to have the opportunity to achieve moderate to large antler size. Several strategies are utilized to limit buck harvest and increase buck survival, such as property buck harvest limits, hunter buck harvest limits, hunter education, doe hunting emphasis, doe harvest requirement before harvesting a buck, and shoulder mount requirement when a buck is harvested. Successful programs usually incorporate several strategies.

Some deer harvest management programs on private properties allow hunters to harvest bucks only when their antlers score above certain

thresholds, which encourages hunters to be more selective and pass up small-antlered bucks. For such approaches to be successful, hunters and deer managers need to be able to judge or estimate antler scores when viewing bucks in the field. By studying the photos and associated parameters in this publication, many readers can improve their ability to estimate antler scores of bucks in the field.

Bucks in this publication were harvested in Oklahoma and are organized by gross antler score from lower to higher. We attempt to show the photos at a 1:8 scale (1 inch in a photo on an 8.5-inch x 11-inch page represents approximately 8 inches actual size), so apparent differences in antler size can represent actual differences; however, each photo has depth and angle distortions that limit accurate correlation. When available, the following information is provided for each buck: photos depicting front and side views of head with antlers, gross and net Boone and Crockett scores, number of points, inside and outside spreads, main beam lengths, antler circumferences, point lengths and dressed weight.

In this publication, antler score refers to Boone and Crockett score. The Boone and Crockett scoring system (www.boone-crockett.org) is the most widely used and accepted scoring system for big game such as white-tailed deer. Several antler score record and award programs such as Pope and Young Records, Cy Curtis Awards, Texas Big Game Awards, Magnolia Records, Outstanding White-tailed Deer, etc., use this scoring system. Boone and Crockett white-tailed deer antler score represents a sum of antler lengths, point lengths, circumferences and inside spread measured in inches to the nearest $\frac{1}{8}$ inch.

Net typical Boone and Crockett score includes deductions for asymmetry and non-typical points (Figure 1). Net non-typical Boone and Crockett score adds the collective length of

non-typical points to the net typical score (Figure 2). The typical tine arrangement arises from the top of the main beams. Non-typical points originate from other locations such as other points, the sides or bottoms of the main beams, or between typical points.

The Boone and Crockett Club typically does not utilize or record gross score. However, many hunters and several other programs use and refer to gross antler score. In this publication, gross antler score is the net typical Boone and Crockett score plus deductions (sum of column 3 on Figure 1) and the sum of non-typical point lengths, or the net non-typical score plus deductions.

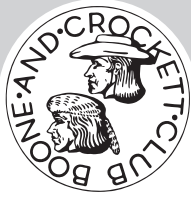
To be a 'point,' a projection must be at least 1 inch long and must be longer than its broadest width at least 1 inch from the tip (Figure 3). Length of a point is measured along the outside center of a point between its tip and base. The base of a point is the location where the normal surface of the main beam or other point would occur without the point. Inside spread is the widest space between the antler beams perpendicular to the center line of the skull and parallel to the skull cap (measurement D in Figures 1 and 2). Basal circumference is the smallest circumference measurement between the burr and the first typical point, and is referred to as H1 on the Boone and Crockett score sheets (Figures 1 and 2). Three additional circumferences are measured on each antler, which are referred to as H2, H3 and H4 on the Boone and Crockett score sheets (Figures 1 and 2). The burr is a ridge at the base of an antler just above the location where an antler attaches to the frontal bone. The first typical point (also called a brow tine) on an antler is referred to as G1 on the Boone and Crockett score sheets (Figures 1 and 2); however, it is not always present. Successive typical points are referred to as G2, G3, etc., on the Boone and Crockett score sheets (Figures 1 and 2). ▶

Main beam length (measurement F in Figures 1 and 2) is measured along the outside centerline of an antler from the middle lower edge of the burr to the distal tip of the main beam (Figures 1 and 2). Dressed weight is measured in pounds after removal of abdominal and thoracic viscera and sex organs.

Some scores in this publication are “green” scores (measured before the required Boone and Crockett 60-day drying period). Green scores can be slightly higher than scores for the same antlers measured after the 60-day drying period; nevertheless, green scores should accurately reflect the antlers

seen in photographs of recently harvested bucks. Green scores are indicated with an asterisk.

This information is published as a digital, online publication so the authors can update or revise the publication easily.

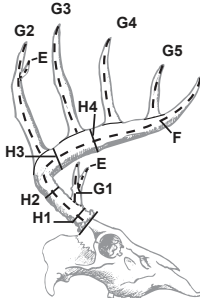
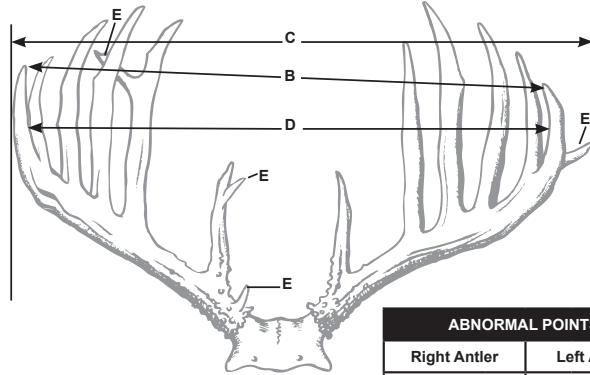


BOONE AND CROCKETT CLUB®
OFFICIAL SCORING SYSTEM FOR NORTH AMERICAN BIG GAME TROPHIES

TYPICAL WHITETAIL AND COUES' DEER

(CHECK ONE):

	MINIMUM SCORES AWARDS	ALL-TIME
<input type="checkbox"/> whitetail	160	170
<input type="checkbox"/> Coues'	100	110



ABNORMAL POINTS	
Right Antler	Left Antler

SEE OTHER SIDE FOR SCORING INSTRUCTIONS

BELOW DATA (A, B, & C) DO NOT CALCULATE IN THE FINAL SCORE BUT ARE REQUIRED

A. No. Points on Right Antler		No. Points on Left Antler				
B. Tip to Tip Spread		C. Greatest Spread			SUBTOTALS	
				TOTAL TO E		
D. Inside Spread of Main Beams		SPREAD CREDIT (May Equal But Not Exceed Longer MAIN BEAM)		Column 1 Right Antler	Column 2 Left Antler	Column 3 Difference
E. Total of Lengths of Abnormal Points						
F. Length of Main Beam						
G-1. Length of First Point						
G-2. Length of Second Point						
G-3. Length of Third Point						
G-4. Length of Fourth Point, If Present						
G-5. Length of Fifth Point, If Present						
G-6. Length of Sixth Point, If Present						
G-7. Length of Seventh Point, If Present						
H-1. Circumference at Smallest Place Between Burr and First Point						
H-2. Circumference at Smallest Place Between First and Second Points						
H-3. Circumference at Smallest Place Between Second and Third Points						
H-4. Circumference at Smallest Place Between Third and Fourth Points						
TOTALS						

ADD TOGETHER:	Spread Credit		Exact Locality Where Killed:*	County:	State/Prov:
	Column 1		Hunter (Legal Name):	Date Killed:	
	Column 2		Trophy Owner (Legal Name):	Telephone #:	
	Subtotal		Trophy Owner's Address:		
SUBTRACT:	Column 3		Trophy Owner's Email:	Guide's Name:	
FINAL SCORE			Remarks (Mention Any Abnormalities or Unique Qualities):		

*Geographic location (lake, mountain, river, etc.) required for trophies taken in Canada and Alaska. Boone and Crockett Club® Official Measurer I.D. Number _____
 Mail To: Boone and Crockett Club ■ 250 Station Drive, Missoula, MT 59801 ■ (406) 542-1888 ■ www.booneandcrockettclub.com

No part of this scoring system may be altered in any way. No part of this score chart may be altered or copied without express written permission from the Boone and Crockett Club. A score chart is not authenticated until signed and dated by a certified Boone and Crockett Club Official Measurer. No scores are official Boone and Crockett scores until verified and the trophy is accepted by the Boone and Crockett Club. All trophy entries into the Boone and Crockett Club's Awards Programs are subject to verification.

COPYRIGHT © 2011 BY BOONE AND CROCKETT CLUB®

Figure 1. Boone and Crockett Club typical white-tailed deer score chart (courtesy of Boone and Crockett Club website <http://www.boone-crockett.org>)



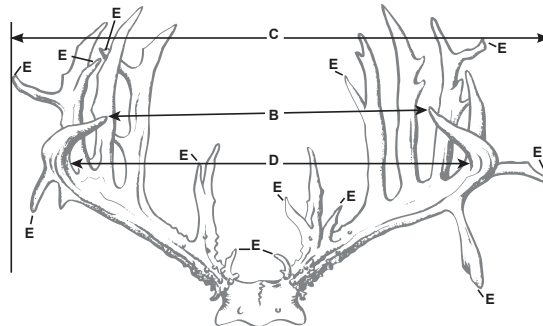
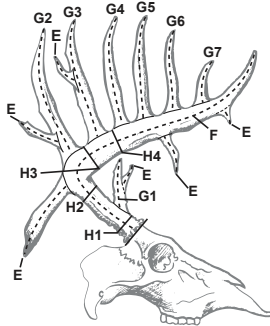
BOONE AND CROCKETT CLUB®

OFFICIAL SCORING SYSTEM FOR NORTH AMERICAN BIG GAME TROPHIES

NON-TYPICAL WHITETAIL AND COUES' DEER

(CHECK ONE):

<input type="checkbox"/> whitetail	185	195
<input type="checkbox"/> Coues'	105	120
	MINIMUM SCORES AWARDS	ALL-TIME



ABNORMAL POINTS	
Right Antler	Left Antler

SEE OTHER SIDE FOR SCORING INSTRUCTIONS						
BELOW DATA (A, B, & C) DO NOT CALCULATE IN THE FINAL SCORE BUT ARE REQUIRED						
A. No. Points on Right Antler		No. Points on Left Antler				
B. Tip to Tip Spread		C. Greatest Spread			SUBTOTALS	
				E. TOTAL		
D. Inside Spread of Main Beams		SPREAD CREDIT (May Equal But Not Exceed Longer MAIN BEAM)		Column 1	Column 2	Column 3
				Right Antler	Left Antler	Difference
F. Length of Main Beam						
G-1. Length of First Point						
G-2. Length of Second Point						
G-3. Length of Third Point						
G-4. Length of Fourth Point						
G-5. Length of Fifth Point						
G-6. Length of Sixth Point, If Present						
G-7. Length of Seventh Point, If Present						
H-1. Circumference at Smallest Place Between Burr and First Point						
H-2. Circumference at Smallest Place Between First and Second Points						
H-3. Circumference at Smallest Place Between Second and Third Points						
H-4. Circumference at Smallest Place Between Third and Fourth Points						
TOTALS						
ADD TOGETHER:	Spread Credit		Exact Locality Where Killed:*		County:	State/Prov:
	Column 1		Hunter (Legal Name):		Date Killed:	
	Column 2		Trophy Owner (Legal Name):		Telephone #:	
	Subtotal		Trophy Owner's Address:			
SUBTRACT:	Column 3		Trophy Owner's Email:		Guide's Name:	
	Subtotal		Remarks (Mention Any Abnormalities or Unique Qualities):			
	Add Line E. Total					
FINAL SCORE			*Geographic location (lake, mountain, river, etc.) required for trophies taken in Canada and Alaska.			
			Boone and Crockett Club® Official Measurer I.D. Number			
Mail To: Boone and Crockett Club ■ 250 Station Drive, Missoula, MT 59801 ■ (406) 542-1888 ■ www.booneandcrockettclub.com						

No part of this scoring system may be altered in any way. No part of this score chart may be altered or copied without express written permission from the Boone and Crockett Club. A score chart is not authenticated until signed and dated by a certified Boone and Crockett Club Official Measurer. No scores are official Boone and Crockett scores until verified and the trophy is accepted by the Boone and Crockett Club. All trophy entries into the Boone and Crockett Club's Awards Programs are subject to verification.

Figure 2. Boone and Crockett Club non-typical white-tailed deer score chart (courtesy of Boone and Crockett Club website <http://www.boone-crockett.org>)

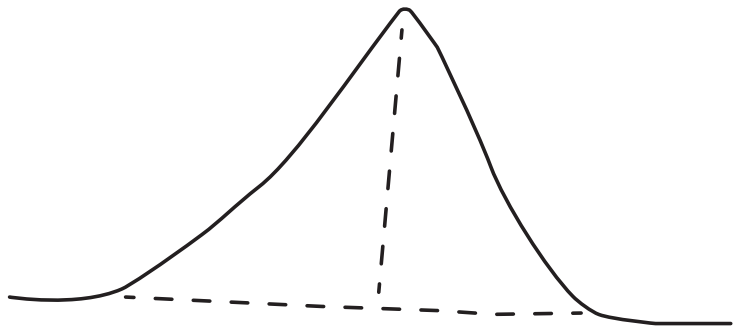


Figure 3. *Antler projection too wide to be a point*



Gross score $85 \frac{3}{8}^*$
Typical score $59 \frac{1}{8}^*$
Non-typical score $59 \frac{1}{8}^*$

Tip to tip spread
 Greatest spread
 D - inside spread $12 \frac{1}{8}$

		Right	Left
Points	7	2	5
F - main beam length		$8 \frac{1}{2}$	$18 \frac{5}{8}$
G1 - 1st point length		$2 \frac{7}{8}$	$3 \frac{5}{8}$
G2 - 2nd point length		9	$4 \frac{7}{8}$
G3 - 3rd point length		0	$4 \frac{3}{8}$
G4 - 4th point length		0	$1 \frac{1}{2}$
H1 circumference		4	4
H2 circumference		$3 \frac{1}{4}$	$3 \frac{3}{8}$
H3 circumference		0	$2 \frac{7}{8}$
H4 circumference		0	$2 \frac{3}{8}$

Non-typical point lengths 0 0

Dressed weight 142



Gross score 99 $\frac{3}{8}$ *
Typical score 96 $\frac{1}{2}$ *
Non-typical score 96 $\frac{1}{2}$ *

Tip to tip spread 13 $\frac{7}{8}$
 Greatest spread
 D - inside spread 16 $\frac{1}{4}$

		Right	Left
Points	6	3	3
F - main beam length		18	18 $\frac{1}{4}$
G1 - 1st point length		4 $\frac{3}{8}$	5 $\frac{1}{8}$
G2 - 2nd point length		6 $\frac{1}{8}$	7
H1 circumference		3 $\frac{3}{4}$	3 $\frac{3}{4}$
H2 circumference		3 $\frac{1}{8}$	3 $\frac{1}{4}$
H3 circumference		2 $\frac{3}{4}$	2 $\frac{5}{8}$
H4 circumference		2 $\frac{7}{8}$	2 $\frac{1}{8}$

Non-typical point lengths 0 0

Dressed weight not available



Gross score 103 $\frac{1}{8}$
Typical score 95 $\frac{1}{4}$
Non-typical score 95 $\frac{1}{4}$

Tip to tip spread 13 $\frac{5}{8}$
 Greatest spread 17
 D - inside spread 16

		Right	Left
Points	8	4	4
F - main beam length		18 $\frac{1}{2}$	16 $\frac{5}{8}$
G1 - 1st point length		3 $\frac{3}{4}$	1 $\frac{7}{8}$
G2 - 2nd point length		7 $\frac{1}{8}$	7 $\frac{5}{8}$
G3 - 3rd point length		2 $\frac{7}{8}$	5 $\frac{1}{4}$
H1 circumference		3 $\frac{5}{8}$	3 $\frac{7}{8}$
H2 circumference		3	3 $\frac{3}{8}$
H3 circumference		2 $\frac{3}{4}$	2 $\frac{7}{8}$
H4 circumference		1 $\frac{3}{4}$	2 $\frac{1}{4}$

Non-typical point lengths 0 0

Dressed weight 139



Gross score 105 $\frac{7}{8}$ *
Typical score 98 $\frac{5}{8}$ *
Non-typical score 101 $\frac{3}{8}$ *

Tip to tip spread
 Greatest spread
 D - inside spread 14 $\frac{1}{2}$

		Right	Left
Points	10	4	6
F - main beam length		17 $\frac{3}{8}$	18 $\frac{1}{4}$
G1 - 1st point length		2 $\frac{1}{4}$	3 $\frac{1}{2}$
G2 - 2nd point length		7 $\frac{1}{4}$	7 $\frac{1}{8}$
G3 - 3rd point length		4 $\frac{1}{2}$	5 $\frac{1}{2}$
G4 - 4th point length		0	2 $\frac{1}{4}$
H1 circumference		3 $\frac{1}{2}$	3 $\frac{1}{2}$
H2 circumference		3	3
H3 circumference		2 $\frac{7}{8}$	2 $\frac{3}{4}$
H4 circumference		2 $\frac{1}{4}$	2 $\frac{1}{2}$

Non-typical point lengths 0 1 $\frac{3}{8}$

Dressed weight 125



Gross score 108 $\frac{3}{4}$
Typical score 100 $\frac{7}{8}$
Non-typical score 100 $\frac{7}{8}$

Tip to tip spread 12 $\frac{5}{8}$
 Greatest spread 17 $\frac{1}{2}$
 D - inside spread 16 $\frac{1}{8}$

		Right	Left
Points	8	3	5
F - main beam length		18 $\frac{1}{2}$	19 $\frac{1}{4}$
G1 - 1st point length		0	3
G2 - 2nd point length		6 $\frac{3}{8}$	6 $\frac{5}{8}$
G3 - 3rd point length		6 $\frac{1}{4}$	5 $\frac{7}{8}$
G4 - 4th point length		0	2 $\frac{3}{4}$
H1 circumference		3 $\frac{3}{4}$	3 $\frac{3}{4}$
H2 circumference		3	3
H3 circumference		3	2 $\frac{7}{8}$
H4 circumference		2	2 $\frac{5}{8}$

Non-typical point lengths 0 0

Dressed weight 125

WILDLIFE



Gross score 109 $\frac{1}{4}$
Typical score 104
Non-typical score 104

Tip to tip spread 15 $\frac{7}{8}$
 Greatest spread 19 $\frac{1}{4}$
 D - inside spread 18

		Right	Left
Points	10	5	5
F - main beam length		16 $\frac{1}{2}$	15 $\frac{5}{8}$
G1 - 1st point length		3	3 $\frac{3}{8}$
G2 - 2nd point length		6 $\frac{1}{4}$	5 $\frac{5}{8}$
G3 - 3rd point length		6	5 $\frac{3}{8}$
G4 - 4th point length		1 $\frac{1}{2}$	2
H1 circumference		3 $\frac{3}{4}$	4
H2 circumference		3 $\frac{3}{8}$	3 $\frac{3}{8}$
H3 circumference		3 $\frac{1}{4}$	3 $\frac{1}{8}$
H4 circumference		2 $\frac{5}{8}$	2 $\frac{1}{2}$

Non-typical point lengths 0 0

Dressed weight 142



Gross score 112 $\frac{3}{4}$
Typical score 109 $\frac{3}{8}$
Non-typical score 109 $\frac{3}{8}$

Tip to tip spread 10 $\frac{1}{8}$
 Greatest spread 17 $\frac{1}{2}$
 D - inside spread 15 $\frac{1}{8}$

		Right	Left
Points	9	4	5
F - main beam length		19 $\frac{7}{8}$	20 $\frac{1}{4}$
G1 - 1st point length		2 $\frac{1}{4}$	2 $\frac{1}{8}$
G2 - 2nd point length		7 $\frac{1}{4}$	6 $\frac{7}{8}$
G3 - 3rd point length		5 $\frac{1}{4}$	5 $\frac{1}{4}$
G4 - 4th point length		0	2
H1 circumference		3 $\frac{3}{4}$	3 $\frac{3}{4}$
H2 circumference		3 $\frac{1}{4}$	3 $\frac{1}{4}$
H3 circumference		3 $\frac{1}{4}$	3 $\frac{3}{8}$
H4 circumference		2 $\frac{3}{4}$	3 $\frac{1}{8}$

Non-typical point lengths 0 0

Dressed weight 114



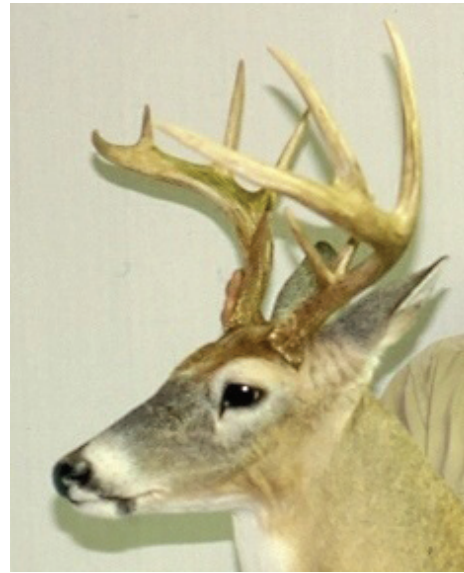
Gross score	114 $\frac{5}{8}$
Typical score	108 $\frac{3}{4}$
Non-typical score	108 $\frac{3}{4}$

Tip to tip spread	4 $\frac{3}{8}$
Greatest spread	14 $\frac{7}{8}$
D - inside spread	13 $\frac{1}{4}$

		Right	Left
Points	9	4	5
F - main beam length		18 $\frac{1}{2}$	19 $\frac{1}{8}$
G1 - 1st point length		3	2 $\frac{7}{8}$
G2 - 2nd point length		8	7 $\frac{1}{8}$
G3 - 3rd point length		7 $\frac{5}{8}$	7 $\frac{1}{2}$
G4 - 4th point length		0	3 $\frac{1}{2}$
H1 circumference		3 $\frac{3}{8}$	3 $\frac{3}{8}$
H2 circumference		3	3
H3 circumference		3	3 $\frac{1}{4}$
H4 circumference		2 $\frac{3}{8}$	2 $\frac{3}{4}$

Non-typical point lengths		0	0
---------------------------	--	---	---

Dressed weight	93
----------------	----



Gross score 115 $\frac{1}{8}$
Typical score 98 $\frac{1}{8}$
Non-typical score 104 $\frac{7}{8}$

Tip to tip spread 12 $\frac{5}{8}$
 Greatest spread
 D - inside spread 16 $\frac{1}{4}$

		Right	Left
Points	10	5	5
F - main beam length		16 $\frac{7}{8}$	18 $\frac{7}{8}$
G1 - 1st point length		3 $\frac{1}{4}$	3 $\frac{1}{8}$
G2 - 2nd point length		4 $\frac{7}{8}$	8 $\frac{1}{8}$
G3 - 3rd point length		5	6 $\frac{7}{8}$
G4 - 4th point length		2	0
H1 circumference		3 $\frac{3}{8}$	3 $\frac{5}{8}$
H2 circumference		3 $\frac{3}{8}$	3 $\frac{1}{4}$
H3 circumference		3 $\frac{3}{4}$	3 $\frac{5}{8}$
H4 circumference		3	2 $\frac{1}{2}$

Non-typical point lengths 0 3 $\frac{3}{8}$

Dressed weight 118



Gross score 117
Typical score 112 $\frac{7}{8}$
Non-typical score 112 $\frac{7}{8}$

Tip to tip spread 11 $\frac{7}{8}$
 Greatest spread 19 $\frac{3}{4}$
 D - inside spread 16 $\frac{7}{8}$

		Right	Left
Points	10	5	5
F - main beam length		19 $\frac{1}{4}$	19 $\frac{5}{8}$
G1 - 1st point length		3 $\frac{5}{8}$	3 $\frac{1}{2}$
G2 - 2nd point length		4 $\frac{3}{4}$	6 $\frac{1}{4}$
G3 - 3rd point length		5 $\frac{1}{2}$	6 $\frac{7}{8}$
G4 - 4th point length		1 $\frac{3}{8}$	1 $\frac{3}{4}$
H1 circumference		3 $\frac{5}{8}$	3 $\frac{3}{4}$
H2 circumference		3 $\frac{3}{4}$	3 $\frac{5}{8}$
H3 circumference		3 $\frac{5}{8}$	3 $\frac{5}{8}$
H4 circumference		2 $\frac{7}{8}$	2 $\frac{3}{4}$

Non-typical point lengths 0 0

Dressed weight 116



Gross score 117 $\frac{3}{4}$ *
Typical score 111 $\frac{1}{8}$ *
Non-typical score 111 $\frac{1}{8}$ *

Tip to tip spread 16 $\frac{1}{2}$
 Greatest spread 19 $\frac{5}{8}$
 D - inside spread 18 $\frac{1}{8}$

		Right	Left
Points	8	4	4
F - main beam length		18 $\frac{3}{8}$	15 $\frac{5}{8}$
G1 - 1st point length		3 $\frac{5}{8}$	2
G2 - 2nd point length		8 $\frac{3}{8}$	8
G3 - 3rd point length		7 $\frac{1}{4}$	8
H1 circumference		3 $\frac{7}{8}$	3 $\frac{7}{8}$
H2 circumference		3	3
H3 circumference		3 $\frac{3}{8}$	3 $\frac{7}{8}$
H4 circumference		2 $\frac{5}{8}$	3 $\frac{1}{4}$

Non-typical point lengths 0 0

Dressed weight 122



Gross score 120 $\frac{3}{8}$ *
Typical score 113*
Non-typical score 113*

Tip to tip spread 7 $\frac{1}{2}$
 Greatest spread
 D - inside spread 13 $\frac{5}{8}$

		Right	Left
Points	10	5	5
F - main beam length		18 $\frac{1}{2}$	18
G1 - 1st point length		3 $\frac{3}{8}$	2 $\frac{1}{4}$
G2 - 2nd point length		6	8 $\frac{7}{8}$
G3 - 3rd point length		7 $\frac{3}{4}$	8
G4 - 4th point length		4 $\frac{3}{8}$	2 $\frac{5}{8}$
H1 circumference		3 $\frac{3}{8}$	3 $\frac{1}{4}$
H2 circumference		3 $\frac{1}{4}$	3 $\frac{1}{4}$
H3 circumference		3 $\frac{1}{2}$	3 $\frac{7}{8}$
H4 circumference		3 $\frac{1}{4}$	2 $\frac{7}{8}$

Non-typical point lengths 0 0

Dressed weight not available



Gross score 121 ½
Typical score 115 ½
Non-typical score 115 ½

Tip to tip spread 11 ⅞
 Greatest spread 17 ¼
 D - inside spread 15 ¾

		Right	Left
Points	9	4	5
F - main beam length		19 ½	19 ⅝
G1 - 1st point length		3 ⅞	4 ⅜
G2 - 2nd point length		8 ⅛	8 ⅜
G3 - 3rd point length		5 ½	6 ½
G4 - 4th point length		0	2 ½
H1 circumference		4 ¼	4 ⅛
H2 circumference		3 ½	3 ½
H3 circumference		3 ⅜	3 ⅜
H4 circumference		2 ⅜	2 ⅞

Non-typical point lengths 0 0

Dressed weight 136



Gross score 121 $\frac{5}{8}$
Typical score 111
Non-typical score 114 $\frac{3}{4}$

Tip to tip spread 14
 Greatest spread 19
 D - inside spread 16 $\frac{7}{8}$

		Right	Left
Points	11	6	5
F - main beam length		16 $\frac{1}{4}$	17 $\frac{3}{8}$
G1 - 1st point length		4 $\frac{5}{8}$	5 $\frac{1}{8}$
G2 - 2nd point length		7 $\frac{3}{4}$	6
G3 - 3rd point length		4 $\frac{7}{8}$	6 $\frac{3}{8}$
G4 - 4th point length		2 $\frac{7}{8}$	4 $\frac{1}{2}$
H1 circumference		3 $\frac{3}{4}$	3 $\frac{3}{4}$
H2 circumference		3 $\frac{1}{4}$	3 $\frac{1}{4}$
H3 circumference		3	3 $\frac{1}{4}$
H4 circumference		2 $\frac{3}{4}$	2 $\frac{7}{8}$

Non-typical point lengths 1 $\frac{7}{8}$ 0

Dressed weight 105 (crippled & very thin)



Gross score 121 $\frac{5}{8}$ *
Typical score 118 $\frac{1}{4}$ *
Non-typical score 118 $\frac{1}{4}$ *

Tip to tip spread 12 $\frac{1}{2}$
 Greatest spread 19 $\frac{1}{4}$
 D - inside spread 17 $\frac{3}{4}$

		Right	Left
Points	8	4	4
F - main beam length		21 $\frac{3}{4}$	21 $\frac{1}{4}$
G1 - 1st point length		3 $\frac{5}{8}$	3 $\frac{3}{4}$
G2 - 2nd point length		6 $\frac{3}{4}$	7 $\frac{1}{2}$
G3 - 3rd point length		4 $\frac{1}{2}$	5 $\frac{5}{8}$
H1 circumference		4 $\frac{1}{2}$	4 $\frac{5}{8}$
H2 circumference		4	4 $\frac{1}{8}$
H3 circumference		3 $\frac{3}{8}$	3
H4 circumference		2 $\frac{1}{4}$	2 $\frac{5}{8}$

Non-typical point lengths 0 0

Dressed weight 118



Gross score	121 $\frac{7}{8}$
Typical score	107 $\frac{3}{4}$
Non-typical score	117

Tip to tip spread	5 $\frac{3}{4}$
Greatest spread	15 $\frac{1}{2}$
D - inside spread	13 $\frac{5}{8}$

		Right	Left
Points	12	6	6
F - main beam length		16 $\frac{1}{8}$	16 $\frac{7}{8}$
G1 - 1st point length		2 $\frac{5}{8}$	2 $\frac{5}{8}$
G2 - 2nd point length		6 $\frac{3}{8}$	7 $\frac{1}{2}$
G3 - 3rd point length		8 $\frac{3}{4}$	8
G4 - 4th point length		6 $\frac{1}{8}$	4 $\frac{1}{8}$
H1 circumference		3 $\frac{1}{4}$	3 $\frac{3}{8}$
H2 circumference		3	3
H3 circumference		3 $\frac{1}{4}$	3 $\frac{1}{8}$
H4 circumference		2 $\frac{3}{4}$	2 $\frac{3}{4}$

Non-typical point lengths		1 $\frac{5}{8}$	3
---------------------------	--	-----------------	---

Dressed weight	128
----------------	-----



Gross score	123 ½
Typical score	117 ¾
Non-typical score	121 ¼

Tip to tip spread	2 ⅛
Greatest spread	15 ¾
D - inside spread	14

		Right	Left
Points	9	5	4
F - main beam length		19 ⅞	21 ⅛
G1 - 1st point length		4	3 ⅝
G2 - 2nd point length		8 ⅞	8 ⅝
G3 - 3rd point length		7 ⅛	7 ¼
H1 circumference		4 ¼	4 ¼
H2 circumference		3 ⅝	3 ¾
H3 circumference		3 ⅜	3 ⅜
H4 circumference		2 ¼	2 ⅜

Non-typical point lengths		1 ¾	0
---------------------------	--	-----	---

Dressed weight	145
----------------	-----



Gross score	123 $\frac{3}{4}$
Typical score	116 $\frac{7}{8}$
Non-typical score	116 $\frac{7}{8}$

Tip to tip spread	16 $\frac{1}{2}$
Greatest spread	19 $\frac{7}{8}$
D - inside spread	18 $\frac{7}{8}$

		Right	Left
Points	7	4	3
F - main beam length		21 $\frac{3}{4}$	22 $\frac{3}{8}$
G1 - 1st point length		4 $\frac{1}{8}$	0
G2 - 2nd point length		8 $\frac{1}{2}$	7 $\frac{3}{4}$
G3 - 3rd point length		7 $\frac{3}{8}$	6
H1 circumference		4 $\frac{7}{8}$	4 $\frac{7}{8}$
H2 circumference		3 $\frac{1}{2}$	3 $\frac{1}{2}$
H3 circumference		3	3
H4 circumference		2 $\frac{1}{8}$	2 $\frac{1}{4}$

Non-typical point lengths	0	0
---------------------------	---	---

Dressed weight	123
----------------	-----



Gross score	124 1/8*
Typical score	122 1/4*
Non-typical score	122 1/4*

Tip to tip spread	9 1/2
Greatest spread	15 1/2
D - inside spread	14

		Right	Left
Points	8	4	4
F - main beam length		20 3/4	20 7/8
G1 - 1st point length		6 1/8	6 1/4
G2 - 2nd point length		7 5/8	8 1/4
G3 - 3rd point length		7 3/8	6 3/4
H1 circumference		4	4
H2 circumference		3 3/8	3 1/4
H3 circumference		3 3/8	3 1/4
H4 circumference		2 1/2	2 3/8

Non-typical point lengths		0	0
---------------------------	--	---	---

Dressed weight	135
----------------	-----

WILDLIFE



Gross score 125 $\frac{1}{8}$
Typical score 123
Non-typical score 123

Tip to tip spread
 Greatest spread
 D - inside spread 16 $\frac{1}{2}$

		Right	Left
Points	10	5	5
F - main beam length		21	20 $\frac{3}{4}$
G1 - 1st point length		3 $\frac{7}{8}$	4 $\frac{1}{4}$
G2 - 2nd point length		6 $\frac{1}{8}$	6 $\frac{3}{4}$
G3 - 3rd point length		5 $\frac{7}{8}$	6 $\frac{1}{4}$
G4 - 4th point length		1 $\frac{3}{4}$	1 $\frac{7}{8}$
H1 circumference		4 $\frac{1}{2}$	4 $\frac{3}{8}$
H2 circumference		3 $\frac{7}{8}$	3 $\frac{7}{8}$
H3 circumference		3 $\frac{5}{8}$	3 $\frac{5}{8}$
H4 circumference		3 $\frac{1}{4}$	3

Non-typical point lengths 0 0

Dressed weight 153



Gross score 125 ½*
Typical score 124*
Non-typical score 124*

Tip to tip spread
 Greatest spread
 D – inside spread 19 ¾

		Right	Left
Points	8	4	4
F – main beam length		20 ⅜	20 ¾
G1 – 1st point length		2 ¼	2 ¼
G2 – 2nd point length		9 ¼	8 ½
G3 – 3rd point length		7 ½	7 ⅝
H1 circumference		4 ¼	4 ⅛
H2 circumference		3 ⅝	3 ⅝
H3 circumference		3 ⅜	3 ½
H4 circumference		2 ⅜	2 ⅜

Non-typical point lengths 0 0

Dressed weight 124



Gross score	127 $\frac{7}{8}$
Typical score	117 $\frac{1}{8}$
Non-typical score	117 $\frac{1}{8}$

Tip to tip spread	10 $\frac{1}{4}$
Greatest spread	18 $\frac{1}{2}$
D - inside spread	16 $\frac{7}{8}$

		Right	Left
Points	10	5	5
F - main beam length		20 $\frac{1}{2}$	20 $\frac{1}{2}$
G1 - 1st point length		3	3 $\frac{7}{8}$
G2 - 2nd point length		1 $\frac{1}{4}$	8 $\frac{1}{2}$
G3 - 3rd point length		9	8 $\frac{1}{4}$
G4 - 4th point length		5 $\frac{5}{8}$	3 $\frac{7}{8}$
H1 circumference		3 $\frac{5}{8}$	3 $\frac{3}{4}$
H2 circumference		3 $\frac{1}{4}$	3 $\frac{1}{4}$
H3 circumference		3 $\frac{1}{4}$	3 $\frac{1}{4}$
H4 circumference		3 $\frac{1}{8}$	3 $\frac{1}{8}$

Non-typical point lengths		0	0
---------------------------	--	---	---

Dressed weight	130
----------------	-----

WILDLIFE



Gross score 128 $\frac{1}{8}$
Typical score 121 $\frac{1}{2}$
Non-typical score 126 $\frac{1}{4}$

Tip to tip spread 11 $\frac{3}{8}$
 Greatest spread 16 $\frac{1}{8}$
 D - inside spread 14 $\frac{5}{8}$

		Right	Left
Points	11	5	6
F - main beam length		17 $\frac{1}{2}$	17 $\frac{3}{4}$
G1 - 1st point length		3	3
G2 - 2nd point length		8 $\frac{1}{8}$	8 $\frac{1}{2}$
G3 - 3rd point length		8	8 $\frac{3}{4}$
G4 - 4th point length		5 $\frac{1}{4}$	5
H1 circumference		3 $\frac{1}{2}$	3 $\frac{1}{2}$
H2 circumference		3 $\frac{1}{8}$	3 $\frac{1}{8}$
H3 circumference		3 $\frac{3}{8}$	3 $\frac{1}{2}$
H4 circumference		3 $\frac{1}{8}$	3

Non-typical point lengths 0 2 $\frac{3}{8}$

Dressed weight 113



Gross score 129 $\frac{3}{8}$
Typical score 123 $\frac{3}{8}$
Non-typical score 123 $\frac{3}{8}$

Tip to tip spread 11 $\frac{1}{4}$
 Greatest spread 17 $\frac{1}{4}$
 D - inside spread 15 $\frac{5}{8}$

		Right	Left
Points	9	4	5
F - main beam length		21	21 $\frac{3}{8}$
G1 - 1st point length		3 $\frac{1}{8}$	3 $\frac{1}{2}$
G2 - 2nd point length		9	7 $\frac{3}{8}$
G3 - 3rd point length		8 $\frac{1}{4}$	8 $\frac{1}{4}$
G4 - 4th point length		0	3 $\frac{1}{8}$
H1 circumference		4	4
H2 circumference		3 $\frac{5}{8}$	3 $\frac{5}{8}$
H3 circumference		3 $\frac{5}{8}$	3 $\frac{5}{8}$
H4 circumference		3 $\frac{1}{8}$	3 $\frac{1}{8}$

Non-typical point lengths 0 0

Dressed weight 137



Gross score	129 $\frac{7}{8}$
Typical score	126 $\frac{1}{2}$
Non-typical score	126 $\frac{1}{2}$

Tip to tip spread	6 $\frac{3}{4}$
Greatest spread	15 $\frac{1}{2}$
D - inside spread	14 $\frac{1}{4}$

		Right	Left
Points	10	5	5
F - main beam length		19 $\frac{1}{4}$	19 $\frac{7}{8}$
G1 - 1st point length		3 $\frac{5}{8}$	4 $\frac{1}{4}$
G2 - 2nd point length		9	8
G3 - 3rd point length		8	8
G4 - 4th point length		4 $\frac{1}{8}$	5
H1 circumference		4	3 $\frac{3}{4}$
H2 circumference		3 $\frac{3}{8}$	3 $\frac{3}{8}$
H3 circumference		3 $\frac{1}{4}$	3 $\frac{1}{4}$
H4 circumference		2 $\frac{3}{4}$	2 $\frac{3}{4}$

Non-typical point lengths		0	0
---------------------------	--	---	---

Dressed weight	138
----------------	-----



Gross score 130
Typical score 128
Non-typical score 128

Tip to tip spread 10 ½
 Greatest spread 17 ⅛
 D - inside spread 15 ½

		Right	Left
Points	10	5	5
F - main beam length		19	18 ¾
G1 - 1st point length		5 ⅝	5 ¼
G2 - 2nd point length		8 ⅛	8 ⅜
G3 - 3rd point length		7 ⅝	7 ¼
G4 - 4th point length		3 ¼	2 ⅞
H1 circumference		4 ¼	4 ½
H2 circumference		3 ¾	3 ¾
H3 circumference		3 ½	3 ½
H4 circumference		3	3 ⅛

Non-typical point lengths 0 0

Dressed weight 146



Gross score 130 $\frac{7}{8}$
Typical score 120 $\frac{3}{8}$
Non-typical score 120 $\frac{3}{8}$

Tip to tip spread 8 $\frac{7}{8}$
 Greatest spread 15 $\frac{1}{8}$
 D - inside spread 14 $\frac{1}{8}$

		Right	Left
Points	9	4	5
F - main beam length		23 $\frac{3}{8}$	22 $\frac{3}{4}$
G1 - 1st point length		4 $\frac{1}{2}$	3
G2 - 2nd point length		5 $\frac{7}{8}$	6 $\frac{1}{8}$
G3 - 3rd point length		5 $\frac{1}{4}$	7 $\frac{1}{8}$
G4 - 4th point length		0	4 $\frac{3}{4}$
H1 circumference		4 $\frac{1}{2}$	4 $\frac{1}{2}$
H2 circumference		4 $\frac{1}{4}$	4 $\frac{3}{8}$
H3 circumference		4 $\frac{3}{8}$	4 $\frac{1}{2}$
H4 circumference		3 $\frac{1}{8}$	4 $\frac{3}{8}$

Non-typical point lengths 0 0

Dressed weight 150



Gross score 132 ½
Typical score 131
Non-typical score 131

Tip to tip spread 10 ⅞
 Greatest spread 18 ⅞
 D - inside spread 17

		Right	Left
Points	8	4	4
F - main beam length		21 ⅝	21 ¾
G1 - 1st point length		4	4 ½
G2 - 2nd point length		9	9
G3 - 3rd point length		6 ¾	6 ¼
H1 circumference		4 ⅝	4 ⅝
H2 circumference		4 ½	4 ½
H3 circumference		4 ¼	4
H4 circumference		3 ⅛	3

Non-typical point lengths 0 0

Dressed weight 136



Gross score 133
Typical score 129 ¼
Non-typical score 129 ¼

Tip to tip spread 13 ¾
 Greatest spread 21
 D - inside spread 18 ¼

		Right	Left
Points	8	4	4
F - main beam length		23	22 ½
G1 - 1st point length		5 ⅛	5 ⅝
G2 - 2nd point length		8 ¾	6 ⅝
G3 - 3rd point length		8 ¾	8 ¼
H1 circumference		4 ⅛	4 ⅛
H2 circumference		3 ½	3 ½
H3 circumference		3	3
H4 circumference		2 ⅜	2 ½

Non-typical point lengths 0 0

Dressed weight 148



Gross score	135 $\frac{3}{4}$*
Typical score	132 $\frac{1}{2}$*
Non-typical score	132 $\frac{1}{2}$*

Tip to tip spread	9 $\frac{3}{8}$
Greatest spread	19 $\frac{3}{4}$
D - inside spread	18

		Right	Left
Points	9	4	5
F - main beam length		21	20 $\frac{5}{8}$
G1 - 1st point length		7	7
G2 - 2nd point length		9 $\frac{3}{8}$	9 $\frac{1}{2}$
G3 - 3rd point length		7 $\frac{1}{2}$	6 $\frac{1}{4}$
G4 - 4th point length		0	1
H1 circumference		4 $\frac{1}{4}$	4 $\frac{1}{4}$
H2 circumference		3 $\frac{3}{4}$	3 $\frac{5}{8}$
H3 circumference		3 $\frac{3}{4}$	3 $\frac{5}{8}$
H4 circumference		2 $\frac{3}{4}$	2 $\frac{1}{2}$

Non-typical point lengths	0	0
---------------------------	---	---

Dressed weight	123
----------------	-----



Gross score 138 $\frac{3}{8}$ *
Typical score 135 $\frac{5}{8}$ *
Non-typical score 135 $\frac{5}{8}$ *

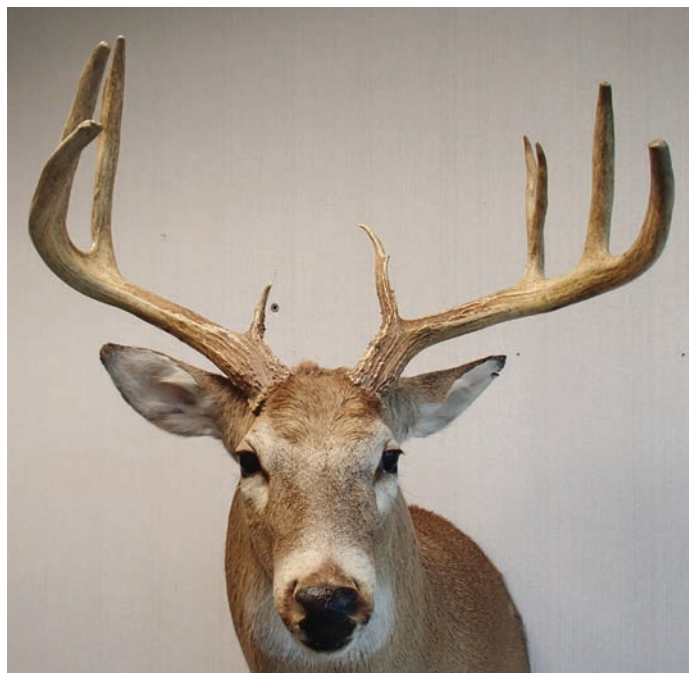
Tip to tip spread 10 $\frac{1}{8}$
 Greatest spread 19
 D - inside spread 17 $\frac{1}{8}$

		Right	Left
Points	10	5	5
F - main beam length		22 $\frac{1}{2}$	22 $\frac{5}{8}$
G1 - 1st point length		3 $\frac{5}{8}$	4 $\frac{3}{8}$
G2 - 2nd point length		7 $\frac{3}{8}$	7 $\frac{3}{4}$
G3 - 3rd point length		7 $\frac{3}{8}$	8 $\frac{3}{8}$
G4 - 4th point length		4 $\frac{3}{8}$	4
H1 circumference		4 $\frac{1}{8}$	4
H2 circumference		3 $\frac{5}{8}$	3 $\frac{5}{8}$
H3 circumference		3 $\frac{1}{2}$	3 $\frac{1}{2}$
H4 circumference		3 $\frac{1}{8}$	3 $\frac{1}{8}$

Non-typical point lengths 0 0

Dressed weight 147

WILDLIFE



Gross score 140 $\frac{3}{4}$
Typical score 117 $\frac{5}{8}$
Non-typical score 124 $\frac{3}{8}$

Tip to tip spread 17 $\frac{1}{8}$
 Greatest spread 23 $\frac{1}{2}$
 D - inside spread 20 $\frac{3}{8}$

		Right	Left
Points	10	5	5
F - main beam length		20 $\frac{3}{4}$	21 $\frac{3}{4}$
G1 - 1st point length		2 $\frac{7}{8}$	5 $\frac{3}{8}$
G2 - 2nd point length		11	7 $\frac{7}{8}$
G3 - 3rd point length		6 $\frac{1}{8}$	7 $\frac{1}{8}$
H1 circumference		5 $\frac{1}{8}$	4 $\frac{5}{8}$
H2 circumference		4 $\frac{1}{8}$	3 $\frac{7}{8}$
H3 circumference		4	3 $\frac{3}{4}$
H4 circumference		2 $\frac{1}{2}$	3 $\frac{1}{8}$

Non-typical point lengths 2 4 $\frac{3}{4}$

Dressed weight not available



Gross score 141 $\frac{3}{4}$ *
Typical score 139*
Non-typical score 139*

Tip to tip spread 3 $\frac{7}{8}$
 Greatest spread 16 $\frac{1}{2}$
 D - inside spread 14 $\frac{1}{2}$

		Right	Left
Points	10	5	5
F - main beam length		20 $\frac{5}{8}$	21 $\frac{3}{8}$
G1 - 1st point length		4	3
G2 - 2nd point length		12	11 $\frac{5}{8}$
G3 - 3rd point length		9	9
G4 - 4th point length		3 $\frac{1}{8}$	3 $\frac{1}{4}$
H1 circumference		4 $\frac{1}{8}$	4 $\frac{1}{4}$
H2 circumference		4	4
H3 circumference		3 $\frac{5}{8}$	3 $\frac{3}{4}$
H4 circumference		3 $\frac{1}{8}$	3 $\frac{3}{8}$

Non-typical point lengths 0 0

Dressed weight 126

WILDLIFE



Gross score 143 $\frac{1}{8}$
Typical score 109 $\frac{1}{2}$
Non-typical score 138 $\frac{1}{2}$

Tip to tip spread 14
 Greatest spread 18 $\frac{5}{8}$
 D - inside spread 17 $\frac{3}{8}$

		Right	Left
Points	16	8	8
F - main beam length		19 $\frac{3}{8}$	19 $\frac{1}{8}$
G1 - 1st point length		3	3 $\frac{1}{8}$
G2 - 2nd point length		7 $\frac{3}{8}$	9 $\frac{1}{4}$
G3 - 3rd point length		7 $\frac{3}{4}$	8
G4 - 4th point length		4 $\frac{3}{8}$	2 $\frac{5}{8}$
H1 circumference		3 $\frac{3}{4}$	3 $\frac{3}{4}$
H2 circumference		3 $\frac{1}{2}$	3 $\frac{1}{2}$
H3 circumference		3 $\frac{3}{8}$	3 $\frac{3}{8}$
H4 circumference		3 $\frac{1}{8}$	2 $\frac{7}{8}$

Non-typical point lengths	1 $\frac{1}{4}$	3 $\frac{3}{8}$
	2 $\frac{3}{8}$	2 $\frac{1}{8}$
	3 $\frac{1}{4}$	2 $\frac{1}{8}$

Dressed weight 118



Gross score 144 $\frac{1}{8}$
Typical score 133 $\frac{1}{4}$
Non-typical score 140

Tip to tip spread
 Greatest spread
 D - inside spread 19 $\frac{5}{8}$

		Right	Left
Points	10	4	6
F - main beam length		23 $\frac{1}{8}$	23 $\frac{3}{4}$
G1 - 1st point length		6 $\frac{1}{2}$	5 $\frac{7}{8}$
G2 - 2nd point length		9 $\frac{7}{8}$	9 $\frac{1}{8}$
G3 - 3rd point length		6	7 $\frac{3}{4}$
H1 circumference		4 $\frac{1}{2}$	4 $\frac{1}{2}$
H2 circumference		4	3 $\frac{7}{8}$
H3 circumference		3 $\frac{3}{4}$	3 $\frac{5}{8}$
H4 circumference		2 $\frac{1}{2}$	2 $\frac{3}{8}$

Non-typical point lengths	0	1 $\frac{1}{4}$
	0	2 $\frac{1}{8}$

Dressed weight 141



Gross score 144 $\frac{1}{4}$
Typical score 124 $\frac{7}{8}$
Non-typical score 134 $\frac{1}{8}$

Tip to tip spread 16 $\frac{1}{8}$
 Greatest spread 22 $\frac{5}{8}$
 D - inside spread 21

		Right	Left
Points	11	5	6
F - main beam length		20 $\frac{5}{8}$	21 $\frac{7}{8}$
G1 - 1st point length		4 $\frac{5}{8}$	3 $\frac{1}{4}$
G2 - 2nd point length		8 $\frac{3}{4}$	9 $\frac{5}{8}$
G3 - 3rd point length		7 $\frac{1}{8}$	8 $\frac{1}{2}$
G4 - 4th point length		0	4
H1 circumference		4 $\frac{1}{8}$	4 $\frac{1}{4}$
H2 circumference		3 $\frac{3}{4}$	4
H3 circumference		4	4 $\frac{1}{8}$
H4 circumference		2 $\frac{5}{8}$	3 $\frac{1}{4}$

Non-typical point lengths 3 $\frac{3}{8}$ 1 $\frac{1}{4}$

Dressed weight not available



Gross score 144 $\frac{3}{8}$
Typical score 137 $\frac{1}{2}$
Non-typical score 137 $\frac{1}{2}$

Tip to tip spread 9
 Greatest spread 20 $\frac{1}{2}$
 D - inside spread 18

		Right	Left
Points	9	4	5
F - main beam length		22 $\frac{5}{8}$	22 $\frac{3}{8}$
G1 - 1st point length		4	4
G2 - 2nd point length		10 $\frac{3}{8}$	10 $\frac{1}{4}$
G3 - 3rd point length		9 $\frac{3}{8}$	10 $\frac{1}{4}$
G4 - 4th point length		0	4 $\frac{3}{4}$
H1 circumference		4	4 $\frac{1}{8}$
H2 circumference		3 $\frac{1}{2}$	3 $\frac{5}{8}$
H3 circumference		3 $\frac{1}{2}$	3 $\frac{3}{4}$
H4 circumference		2 $\frac{3}{4}$	3 $\frac{1}{8}$

Non-typical point lengths 0 0

Dressed weight 152

WILDLIFE



Gross score 146 $\frac{3}{8}$
Typical score 136 $\frac{5}{8}$
Non-typical score 145 $\frac{1}{8}$

Tip to tip spread 14 $\frac{5}{8}$
 Greatest spread 20 $\frac{1}{2}$
 D - inside spread 18 $\frac{7}{8}$

		Right	Left
Points	12	6	6
F - main beam length		20 $\frac{1}{2}$	20 $\frac{1}{2}$
G1 - 1st point length		5 $\frac{1}{2}$	5 $\frac{1}{2}$
G2 - 2nd point length		7 $\frac{1}{2}$	7
G3 - 3rd point length		8	7 $\frac{3}{4}$
G4 - 4th point length		2 $\frac{7}{8}$	3
H1 circumference		4 $\frac{3}{8}$	4 $\frac{3}{8}$
H2 circumference		4 $\frac{5}{8}$	4 $\frac{5}{8}$
H3 circumference		4 $\frac{1}{2}$	4 $\frac{5}{8}$
H4 circumference		3 $\frac{7}{8}$	4 $\frac{1}{8}$

Non-typical point lengths 1 $\frac{7}{8}$ 2 $\frac{3}{8}$

Dressed weight 137



Gross score 148 $\frac{1}{8}$
Typical score 141 $\frac{1}{8}$
Non-typical score 143 $\frac{1}{8}$

Tip to tip spread 5 $\frac{5}{8}$
 Greatest spread 19 $\frac{3}{4}$
 D - inside spread 15 $\frac{1}{8}$

		Right	Left
Points	11	6	5
F - main beam length		22 $\frac{5}{8}$	23 $\frac{1}{8}$
G1 - 1st point length		5 $\frac{7}{8}$	6
G2 - 2nd point length		8 $\frac{5}{8}$	9 $\frac{1}{8}$
G3 - 3rd point length		8 $\frac{3}{8}$	9 $\frac{1}{2}$
G4 - 4th point length		6 $\frac{5}{8}$	3 $\frac{1}{4}$
H1 circumference		4 $\frac{1}{8}$	4 $\frac{1}{8}$
H2 circumference		3 $\frac{1}{2}$	3 $\frac{1}{2}$
H3 circumference		3 $\frac{3}{4}$	3 $\frac{3}{4}$
H4 circumference		3 $\frac{3}{4}$	3 $\frac{3}{8}$

Non-typical point lengths 1 0

Dressed weight not available



Gross score 150 $\frac{3}{4}$
Typical score 146 $\frac{7}{8}$
Non-typical score 146 $\frac{7}{8}$

Tip to tip spread 5 $\frac{7}{8}$
 Greatest spread 18 $\frac{3}{4}$
 D - inside spread 16 $\frac{1}{8}$

		Right	Left
Points	10	5	5
F - main beam length		24	22 $\frac{7}{8}$
G1 - 1st point length		4 $\frac{1}{4}$	5
G2 - 2nd point length		9 $\frac{1}{4}$	9 $\frac{7}{8}$
G3 - 3rd point length		8 $\frac{1}{2}$	9 $\frac{1}{4}$
G4 - 4th point length		3 $\frac{3}{8}$	3 $\frac{5}{8}$
H1 circumference		4 $\frac{1}{2}$	4 $\frac{5}{8}$
H2 circumference		4 $\frac{1}{8}$	4 $\frac{1}{4}$
H3 circumference		4 $\frac{1}{2}$	4 $\frac{1}{2}$
H4 circumference		4 $\frac{1}{8}$	4

Non-typical point lengths 0 0

Dressed weight 156

WILDLIFE



Gross score 150 $\frac{7}{8}$
Typical score 143 $\frac{1}{8}$
Non-typical score 143 $\frac{1}{8}$

Tip to tip spread 11 $\frac{1}{8}$
 Greatest spread 20 $\frac{5}{8}$
 D - inside spread 17 $\frac{7}{8}$

		Right	Left
Points	10	5	5
F - main beam length		24 $\frac{3}{4}$	22 $\frac{3}{8}$
G1 - 1st point length		1 $\frac{7}{8}$	5
G2 - 2nd point length		8 $\frac{7}{8}$	9 $\frac{7}{8}$
G3 - 3rd point length		9	8 $\frac{1}{2}$
G4 - 4th point length		5 $\frac{1}{2}$	5 $\frac{7}{8}$
H1 circumference		4 $\frac{1}{2}$	4 $\frac{1}{2}$
H2 circumference		3 $\frac{3}{4}$	3 $\frac{7}{8}$
H3 circumference		3 $\frac{3}{4}$	4
H4 circumference		3 $\frac{1}{2}$	3 $\frac{1}{2}$

Non-typical point lengths 0 0

Dressed weight 158

WILDLIFE



Gross score 154 ½*
Typical score 121*
Non-typical score 145*

Tip to tip spread 13 ¾
 Greatest spread 20
 D - inside spread 17 ½

		Right	Left
Points	15	8	7
F - main beam length		21 ¾	20 ⅞
G1 - 1st point length		3 ½	5 ⅝
G2 - 2nd point length		11 ⅛	11
G3 - 3rd point length		9 ½	5 ½
G4 - 4th point length		2	3 ¾
H1 circumference		5	4 ¾
H2 circumference		3 ¾	3 ¾
H3 circumference		3 ¾	3 ½
H4 circumference		2 ⅞	3

Non-typical point lengths	1	2 ¾
	1 ⅝	5
	1 ⅝	0

Dressed weight 131



Gross score 155 $\frac{1}{8}$
Typical score 142 $\frac{1}{2}$
Non-typical score 148 $\frac{1}{2}$

Tip to tip spread 20 $\frac{1}{8}$
 Greatest spread
 D - inside spread 24

		Right	Left
Points	11	6	5
F - main beam length		24	23 $\frac{3}{8}$
G1 - 1st point length		6 $\frac{3}{4}$	7
G2 - 2nd point length		6 $\frac{1}{2}$	9 $\frac{3}{8}$
G3 - 3rd point length		7 $\frac{5}{8}$	6 $\frac{3}{8}$
G4 - 4th point length		2 $\frac{1}{2}$	3 $\frac{3}{4}$
H1 circumference		5	5
H2 circumference		3 $\frac{5}{8}$	3 $\frac{7}{8}$
H3 circumference		3 $\frac{1}{2}$	3 $\frac{1}{2}$
H4 circumference		3 $\frac{1}{4}$	3 $\frac{1}{8}$

Non-typical point lengths 3 0

Dressed weight 147



Gross score 157
Typical score 147 ³/₄
Non-typical score 149 ¹/₂

Tip to tip spread 13 ¹/₄
 Greatest spread 22 ³/₈
 D - inside spread 20 ³/₄

		Right	Left
Points	11	6	5
F - main beam length		22 ¹ / ₈	22 ¹ / ₄
G1 - 1st point length		4 ¹ / ₈	4 ¹ / ₈
G2 - 2nd point length		11	8 ³ / ₈
G3 - 3rd point length		10 ¹ / ₂	10 ¹ / ₄
G4 - 4th point length		4	6 ¹ / ₂
H1 circumference		4 ³ / ₄	4 ³ / ₄
H2 circumference		3 ⁷ / ₈	3 ⁷ / ₈
H3 circumference		3 ⁵ / ₈	3 ³ / ₄
H4 circumference		3 ¹ / ₄	3 ³ / ₈

Non-typical point lengths 1 ³/₄ 0

Dressed weight 140



Gross score 158 $\frac{1}{4}$
Typical score 147
Non-typical score 147

Tip to tip spread 19 $\frac{1}{4}$
 Greatest spread 23 $\frac{3}{4}$
 D - inside spread 20 $\frac{3}{4}$

	Right	Left
Points	5	5
F - main beam length	23 $\frac{1}{8}$	23 $\frac{1}{4}$
G1 - 1st point length	4 $\frac{1}{4}$	5 $\frac{3}{4}$
G2 - 2nd point length	12 $\frac{1}{8}$	7 $\frac{7}{8}$
G3 - 3rd point length	11 $\frac{3}{8}$	9 $\frac{3}{8}$
G4 - 4th point length	7 $\frac{1}{8}$	4 $\frac{1}{4}$
H1 circumference	4 $\frac{1}{4}$	4 $\frac{1}{4}$
H2 circumference	3 $\frac{1}{2}$	3 $\frac{1}{2}$
H3 circumference	3 $\frac{5}{8}$	3 $\frac{1}{2}$
H4 circumference	3 $\frac{3}{8}$	3

Non-typical point lengths 0 0

Dressed weight 126

WILDLIFE



Gross score	159
Typical score	139 $\frac{5}{8}$
Non-typical score	150 $\frac{5}{8}$

Tip to tip spread	
Greatest spread	
D - inside spread	17 $\frac{5}{8}$

		Right	Left
Points	15	6	9
F - main beam length		21 $\frac{5}{8}$	21 $\frac{3}{4}$
G1 - 1st point length		3 $\frac{3}{4}$	4 $\frac{1}{4}$
G2 - 2nd point length		6	5 $\frac{3}{4}$
G3 - 3rd point length		6	6 $\frac{3}{8}$
G4 - 4th point length		6 $\frac{3}{8}$	6 $\frac{3}{4}$
G5 - 5th point length		5 $\frac{1}{4}$	4 $\frac{3}{4}$
H1 circumference		4 $\frac{1}{4}$	4 $\frac{1}{8}$
H2 circumference		3 $\frac{3}{4}$	3 $\frac{1}{2}$
H3 circumference		4 $\frac{1}{4}$	9 $\frac{3}{4}$
H4 circumference		4	3 $\frac{5}{8}$

Non-typical point lengths	0	1 $\frac{3}{8}$
	0	3
	0	1 $\frac{1}{8}$

Dressed weight	92 (crippled & thin)
----------------	----------------------



Gross score 163
Typical score 140 ³/₄
Non-typical score 150 ¹/₄

Tip to tip spread 19
 Greatest spread 24 ¹/₄
 D - inside spread 21 ¹/₂

		Right	Left
Points	12	6	6
F - main beam length		28	22 ⁷ / ₈
G1 - 1st point length		5 ¹ / ₂	5 ³ / ₄
G2 - 2nd point length		8 ⁵ / ₈	10
G3 - 3rd point length		7 ⁵ / ₈	10 ¹ / ₂
G4 - 4th point length		2 ⁵ / ₈	4 ³ / ₄
H1 circumference		4 ¹ / ₈	4 ¹ / ₄
H2 circumference		3 ¹ / ₂	3 ⁵ / ₈
H3 circumference		3 ³ / ₄	4
H4 circumference		3 ⁷ / ₈	3 ³ / ₈

Non-typical point lengths 1 ¹/₄ 3 ¹/₂

Dressed weight 132



Gross score 164 $\frac{1}{4}$ *
Typical score 138 $\frac{3}{8}$ *
Non-typical score 161 $\frac{1}{8}$ *

Tip to tip spread 14 $\frac{1}{8}$
 Greatest spread 20
 D - inside spread 18 $\frac{1}{4}$

		Right	Left
Points	16	9	7
F - main beam length		21 $\frac{3}{4}$	20 $\frac{7}{8}$
G1 - 1st point length		5	4 $\frac{1}{2}$
G2 - 2nd point length		10 $\frac{1}{2}$	10 $\frac{3}{8}$
G3 - 3rd point length		8 $\frac{7}{8}$	8 $\frac{5}{8}$
G4 - 4th point length		5	5
G5 - 5th point length		2 $\frac{1}{4}$	1 $\frac{5}{8}$
H1 circumference		4 $\frac{1}{2}$	4 $\frac{1}{4}$
H2 circumference		4	3 $\frac{3}{4}$
H3 circumference		3 $\frac{3}{8}$	3 $\frac{1}{2}$
H4 circumference		3 $\frac{1}{2}$	3 $\frac{3}{8}$

Non-typical point lengths	1 $\frac{5}{8}$	3 $\frac{3}{4}$
	4 $\frac{1}{4}$	0
	1 $\frac{3}{4}$	0

Dressed weight 128



Gross score 164 ½
Typical score 162 ¼
Non-typical score 162 ¼

Tip to tip spread 9 ⅛
 Greatest spread 18 ¼
 D - inside spread 16

		Right	Left
Points	12	6	6
F - main beam length		23 ⅜	23 ¾
G1 - 1st point length		5 ½	5 ⅜
G2 - 2nd point length		9	9
G3 - 3rd point length		9 ¾	10 ½
G4 - 4th point length		7 ½	8 ¼
G5 - 5th point length		1 ½	1 ½
H1 circumference		4 ⅜	4 ½
H2 circumference		4 ⅛	4 ⅛
H3 circumference		4 ¼	4 ¼
H4 circumference		3 ⅞	4

Non-typical point lengths 0 0

Dressed weight 156



Gross score 191 ½
Typical score 95 ¾
Non-typical score 178

Tip to tip spread 7
 Greatest spread 19
 D - inside spread 16 ⅞

		Right	Left
Points	16	9	7
F - main beam length		20 ¾	21 ¼
G1 - 1st point length		5 ⅜	4 ⅜
G2 - 2nd point length		11 ¾	9 ⅜
G3 - 3rd point length		9 ⅞	9 ⅛
G4 - 4th point length		0	7
H1 circumference		4 ½	4 ¾
H2 circumference		4 ⅝	4 ¾
H3 circumference		4 ⅛	4 ⅛
H4 circumference		3 ⅛	4 ⅝

Non-typical point lengths	7 ⅝	3 ⅝
	5 ⅜	3 ⅝
	6 ⅝	0
	10 ⅞	0
	3 ⅜	0

Dressed weight 148



Gross score 191 ½
Typical score 161 ¾
Non-typical score 187 ⅛

Tip to tip spread 8 ¾
 Greatest spread 23 ¾
 D - inside spread 19 ¼

		Right	Left
Points	17	8	9
F - main beam length		27 ¼	26 ⅛
G1 - 1st point length		5	5
G2 - 2nd point length		11 ⅛	11 ¾
G3 - 3rd point length		11 ¾	11 ½
G4 - 4th point length		7 ½	6 ⅛
H1 circumference		4 ⅝	5
H2 circumference		4 ½	4 ⅞
H3 circumference		4 ½	4 ½
H4 circumference		4 ¼	4

Non-typical point lengths	1 ¾	1 ¾
	2 ¾	2 ¼
	0	1 ⅜
	0	3

Dressed weight 141



Gross score 207 $\frac{3}{8}$
Typical score 115 $\frac{7}{8}$
Non-typical score 195 $\frac{5}{8}$

Tip to tip spread 3 $\frac{3}{4}$
 Greatest spread 24 $\frac{7}{8}$
 D - inside spread 15

		Right	Left
Points	21	11	10
F - main beam length		23 $\frac{7}{8}$	24 $\frac{7}{8}$
G1 - 1st point length		6 $\frac{1}{8}$	4 $\frac{5}{8}$
G2 - 2nd point length		12 $\frac{1}{8}$	12 $\frac{3}{4}$
G3 - 3rd point length		8 $\frac{1}{2}$	12 $\frac{1}{2}$
G4 - 4th point length		4 $\frac{3}{4}$	8 $\frac{1}{4}$
H1 circumference		5 $\frac{1}{8}$	4 $\frac{1}{2}$
H2 circumference		4 $\frac{1}{2}$	4 $\frac{5}{8}$
H3 circumference		3 $\frac{3}{4}$	4
H4 circumference		3 $\frac{3}{4}$	3 $\frac{7}{8}$

Non-typical point lengths	2	4 $\frac{1}{4}$
	3 $\frac{1}{2}$	1 $\frac{1}{2}$
	1 $\frac{3}{4}$	3 $\frac{1}{8}$
	3 $\frac{1}{4}$	4 $\frac{7}{8}$
	8 $\frac{7}{8}$	1 $\frac{3}{4}$
	5	

Dressed weight not available



Gross score 228 $\frac{7}{8}$
Typical score 116
Non-typical score 217

Tip to tip spread 17 $\frac{3}{4}$
 Greatest spread 27 $\frac{5}{8}$
 D - inside spread 20 $\frac{1}{4}$

		Right	Left
Points	25	15	10
F - main beam length		23 $\frac{1}{4}$	22 $\frac{1}{8}$
G1 - 1st point length		5 $\frac{3}{4}$	5
G2 - 2nd point length		8 $\frac{1}{2}$	10 $\frac{3}{4}$
G3 - 3rd point length		7 $\frac{3}{4}$	8 $\frac{3}{8}$
G4 - 4th point length		8 $\frac{5}{8}$	8 $\frac{3}{4}$
H1 circumference		4 $\frac{7}{8}$	4 $\frac{3}{4}$
H2 circumference		4 $\frac{1}{4}$	4 $\frac{1}{8}$
H3 circumference		8 $\frac{1}{4}$	5 $\frac{1}{2}$
H4 circumference		10 $\frac{3}{4}$	6 $\frac{3}{4}$

Non-typical point lengths	Right	Left
	3 $\frac{1}{4}$	1 $\frac{5}{8}$
	2 $\frac{1}{8}$	2 $\frac{5}{8}$
	1 $\frac{5}{8}$	2 $\frac{3}{8}$
	1 $\frac{1}{4}$	2 $\frac{1}{4}$
	6 $\frac{1}{2}$	2 $\frac{7}{8}$
	1 $\frac{7}{8}$	0
	4 $\frac{3}{8}$	0
	8 $\frac{1}{4}$	0
	8 $\frac{1}{4}$	0
	1 $\frac{1}{4}$	0

Dressed weight 152

WILDLIFE

THE SAMUEL ROBERTS
NOBLE
FOUNDATION

The Samuel Roberts Noble Foundation
2510 Sam Noble Parkway
Ardmore, Oklahoma 73401
Phone: (580) 223-5810
www.noble.org